



**Government of India
Ministry of Earth Sciences
India Meteorological Department**



Press Release

Date: 28th May, 2025

Time of Issue: 1415 hours IST

Subject: i) A Well marked Low Pressure area over Northwest Bay of Bengal off Odisha coast. It is likely to move slowly northwards and concentrate into a Depression over north Bay of Bengal during next 24 hours.

ii) Very heavy to extremely heavy rainfall likely over Northeastern states and Sub-Himalayan West Bengal & Sikkim till 30th May.

iii) Heavy to very heavy rainfall likely to continue over west coast (Kerala, Karnataka, coastal Maharashtra & Goa) during next 3-4 days with possibility of extremely heavy rainfall over Kerala during 28th-30th, Coastal & Ghat areas of Karnataka on 28th & 29th and over Ghat areas of Tamil Nadu on 29th & 30th May, 2025. It is likely to reduce thereafter.

iv) In association with a fresh Western Disturbance, a fresh spell of rainfall along with thunderstorm & gusty wind likely over northwest India from 29th May.

Advance of Southwest Monsoon: (Annexure I):

- ❖ Southwest Monsoon has further advanced into some more parts of Maharashtra, remaining parts of Karnataka, most parts of Telangana, remaining parts of Andhra Pradesh, some parts of Chhattisgarh & Odisha, remaining parts of westcentral Bay of Bengal today, the 28th May 2025.
- ❖ The Northern Limit of Monsoon passes through 17.0°N/55°E, 17.5°N/60°E, 18°N/65°E, 18.5°N/70°E, Mumbai, Ahilyanagar, Adilabad, Dantewada, Rayagada, 19°N/86°E, 21°N/89°E, Agartala, Goalpara and 28.5°N/89°E.
- ❖ Conditions are favourable for further advance of south west monsoon over some more parts of Chhattisgarh and Odisha, remaining parts Northeastern states, some parts of West Bengal and Sikkim during next 2 days.

Realised weather during past 24 hours till 0830 hours IST of today, the 28th May, 2025 (Annexure II):

- ❖ **Heavy to very heavy rainfall** at isolated places over West Madhya Pradesh, Madhya Maharashtra, Marathwada, Vidarbha, Coastal Andhra Pradesh & Yanam, Telangana, Tamil Nadu, Puducherry & Karaikal, Coastal Karnataka, South Interior Karnataka and Kerala & Mahe. **Heavy rainfall** at isolated places over Odisha, East Uttar Pradesh, Uttarakhand, Konkan & Goa and Chhattisgarh.
- ❖ **Thunderstorm accompanied with Squally/Gusty winds** with speed 70-90 kmph prevailed at isolated places over Jammu-Kashmir-Ladakh-Gilgit-Baltistan-Muzaffarabad, with speed 40-70 kmph over Madhya Pradesh, Vidarbha, Chhattisgarh, Himachal Pradesh, East Uttar Pradesh, Andaman & Nicobar Islands, Gangetic West Bengal, Bihar, Jharkhand, Konkan & Goa, Madhya Maharashtra, Marathawada, Saurashtra & Kutch, South Peninsular India.
- ❖ **Hailstorm observed at isolated places over** Jammu Kashmir, West Madhya Pradesh.

For more details of realised weather, kindly refer [Annexure II](#),

Detailed observations of Maximum Temperature during past 24 hours till 0830 hours IST of today are appended in [Annexure III](#).

i. Weather Systems, Forecast and Warnings (refer to Annexure IV & V):

- ❖ Yesterday's Low pressure area over Northwest Bay of Bengal off Odisha coast become well marked over the same region at 0530 hrs IST of today and persisted as well marked low pressure area over the same region at 0830 hrs IST of Today, the 28th May 2025. It is likely to move slowly northwards and concentrate into a Depression over north Bay of Bengal during next 24 hours.
- ❖ The upper air cyclonic circulation lies over south Punjab and another over west Rajasthan in lower tropospheric levels.
- ❖ The upper air cyclonic circulation over west Rajasthan and the trough runs from cyclonic circulation over west Rajasthan to north Chhattisgarh across east Rajasthan and Madhya Pradesh in lower tropospheric levels.

- ❖ The upper air cyclonic circulation over northeast Madhya Pradesh in lower tropospheric levels.
- ❖ The shear zone roughly along Lat. 17°N over the Indian Region in lower tropospheric levels.
- ❖ The Western Disturbance in middle tropospheric westerlies with its axis at 5.8 km above mean sea level roughly along Long. 70°E to north of Lat. 30°N persists.
- ❖ A fresh Western Disturbance seen as a trough in middle tropospheric westerlies with its axis at 5.8 km above mean sea level runs roughly along Long. 55°E to the north of Lat. 32°N.
- ❖ Under the influence of these systems, the following weather is likely:

South peninsular India:

- ✓ **Fairly widespread to widespread** light/moderate rainfall accompanied with **thunderstorm, lightning & gusty winds speed reaching 40-50 kmph over Kerala & Mahe, Karnataka during 28th May-01st June; Isolated to scattered** light/moderate rainfall accompanied with **thunderstorm, lightning & gusty winds speed reaching 40-50 kmph** likely over **Tamilnadu Puducherry & Karaikal**, Coastal Andhra Pradesh & Yanam, Rayalaseema and Telangana during 28th-31st May.
- ✓ **Isolated heavy rainfall** likely over North Interior Karnataka on 28th & 29th, Coastal Andhra Pradesh & Yanam on 29th & 30th and isolated **heavy to very heavy rainfall** over Coastal Andhra Pradesh & Yanam on 28th, Coastal Karnataka, Kerala & Mahe during 28th May -02nd June; South Interior Karnataka, Telangana, Tamilnadu Puducherry & Karaikal during 28th -30th May.
- ✓ Isolated **extremely heavy rainfall** very likely over Kerala & Mahe during 28th-30th, Coastal & South Interior Karnataka on 28th & 29th, Tamilnadu Puducherry & Karaikal on 29th & 30th May.
- ✓ **Thundersquall wind speed reaching 50-60 kmph gusting to 70 kmph** likely over Karnataka, Coastal Andhra Pradesh & Yanam, Rayalaseema on 28th & 29th May.

West India:

- ✓ **Scattered to fairly widespread** light/moderate rainfall accompanied with **thunderstorm, lightning over Konkan & Goa** during 28th Ma-02nd June, Madhya Maharashtra, Gujarat State, Marathawada on 28th & 29th May.
- ✓ **Isolated heavy rainfall** likely over Marathawada, Gujarat State on 28th; Madhya Maharashtra on 28th & 29th, Konkan & Goa during 28th May -02nd June and isolated **heavy to very heavy rainfall** at some places over Konkan & Goa, Madhya Maharashtra on 28th May.

Northeast India:

- ✓ **Fairly widespread to widespread** light/moderate rainfall accompanied with **thunderstorm, lightning** over Northeast India during next 7 days.
- ✓ Isolated heavy to very heavy rainfall very likely over Sub-Himalayan West Bengal & Sikkim during 29th May- 01st June, Assam & Meghalaya, Arunachal Pradesh, Nagaland, Manipur, Mizoram & Tripura during next 7 days with **isolated extremely heavy rainfall** also likely over Assam & Meghalaya on 29th & 30th, Nagaland, Manipur, Mizoram & Tripura on 29th, Arunachal Pradesh, Sub-Himalayan West Bengal & Sikkim on 30th May.

East & Central India:

- ✓ **Scattered to fairly widespread** light/moderate rainfall accompanied with **thunderstorm, lightning & gusty winds speed reaching 40-50 kmph** likely over Vidarbha, Chhattisgarh, Gangetic West Bengal, Jharkhand, Odisha, Madhya Pradesh, Bihar during 28th May- 01st June with **Thundersquall wind speed reaching 50-60 kmph gusting to 70 kmph** likely over East Madhya Pradesh on 29th, Bihar on 30th May.
- ✓ **Isolated heavy rainfall** likely over Vidarbha on 28th & 29th, Chhattisgarh, Gangetic West Bengal, Odisha during 28th-30th, Bihar during 29th -31st, with isolated **very heavy rainfall** over Vidarbha, Chhattisgarh on 28th, Odisha on 28th & 29th, Bihar on 30th May.

Northwest India:

- ✓ **Scattered to fairly widespread** light/moderate rainfall accompanied with **thunderstorm, lightning & gusty winds speed reaching 40-50 kmph** likely over likely over Jammu-Kashmir-Ladakh-Gilgit-Baltistan-Muzaffarabad, Himachal Pradesh, Uttarakhand, Punjab, Haryana Chandigarh & Delhi; **isolated to scattered** rainfall over Uttar Pradesh, Rajasthan during 28th May-02nd June with **Thundersquall wind speed reaching 50-60 kmph gusting to 70 kmph** likely over Rajasthan during 28th-30th, Jammu-Kashmir-Ladakh-Gilgit-Baltistan-Muzaffarabad during 29th-31st, Punjab on 29th & 30th, Haryana Chandigarh & Delhi on 30th May.
- ✓ **Isolated heavy rainfall** also likely over Uttarakhand during 28th May-01st June.
- ✓ **Dust storm also very likely at isolated places over West Rajasthan during 28th -30th May.**

Maximum Temperature Forecast:

- ❖ Rise by about 2-3°C in maximum temperatures likely over Northwest India during next 2 days; gradual fall by 2-4°C thereafter for subsequent 3 days and no large change thereafter.

- ❖ No significant change in maximum temperatures likely over Central India during next 2 days; gradual rise by 2-3°C thereafter for subsequent 3 days and no large change thereafter.
- ❖ No significant change in maximum temperatures likely over rest parts of the country.

Heat wave warnings:

- ❖ **Heat wave conditions** very likely in isolated pockets of West Rajasthan on 28th & 29th May.

FISHERMEN WARNINGS (Graphics in Annexure VI)

(A) **Fishermen are advised not to venture** from 28th - 02nd June **over** Eastcentral & south Arabian Sea, many parts of westcentral Arabian Sea and along & off Kerala, Karnataka, Konkan & Goa and Lakshadweep, Comorin areas, Gulf of Mannar; along and off Gujarat coast on 30th and 31st May.

(B) Fishermen are advised not to venture along & off Tamil Nadu, Andhra Pradesh, Odisha, West Bengal, Bangladesh, Myanmar coasts from 28th to 30th May; along and off north Andhra Pradesh coast on 31st May; over entire south, central & north Bay of Bengal from 28th - 30th May; over most parts of south, central and north Bay of Bengal on 31st May; over many parts of south, central and north Bay of Bengal on 1st June .

(C) Fishermen are advised not to venture into the Andaman Sea from 28th to 30th May.

Total suspension of fishing operations over above-mentioned areas and dates.

iv. Weather conditions and forecast over Delhi/NCR during 28th May to 31st May, 2025 (Annexure VII)

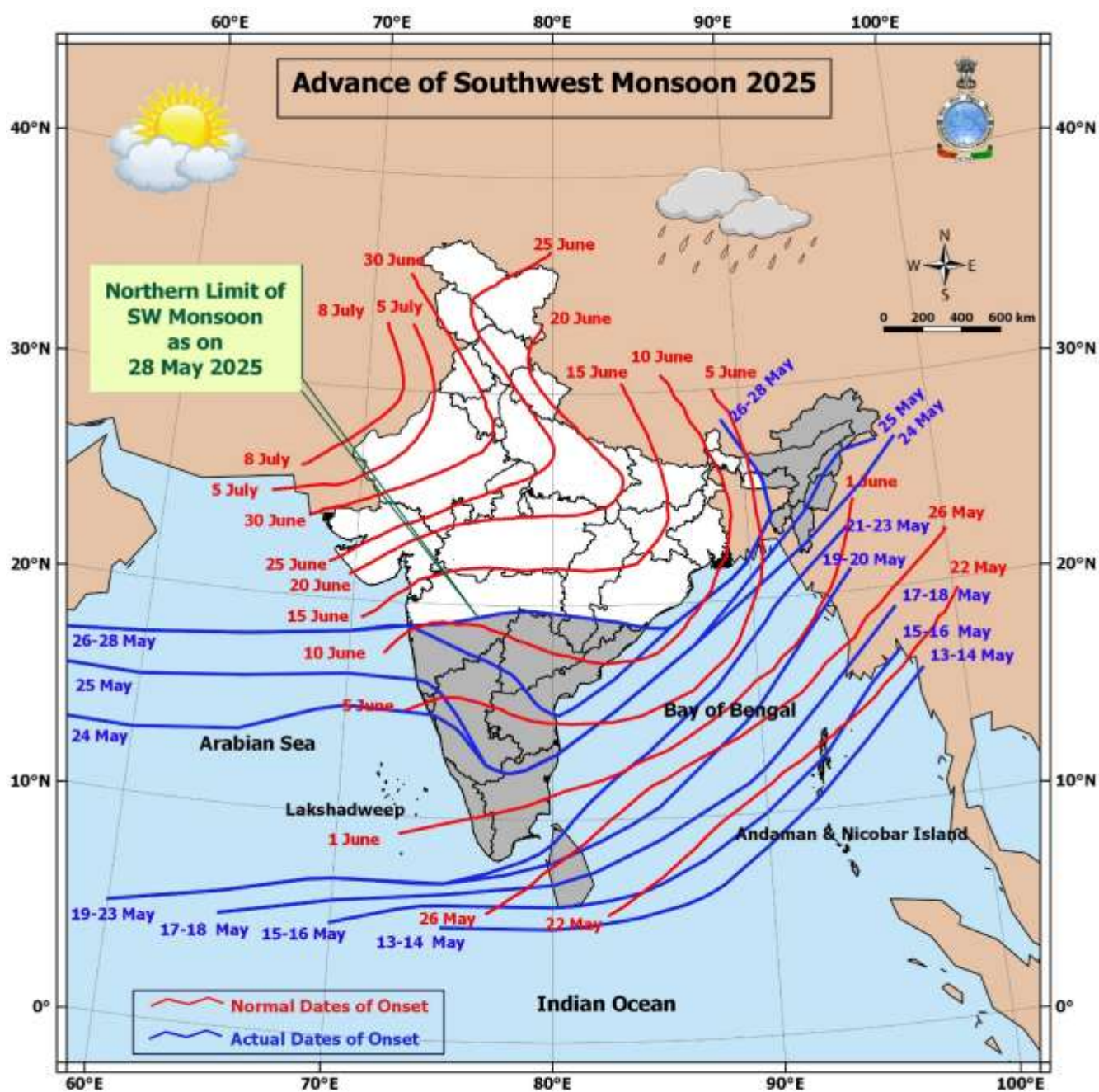
For more details, kindly refer National Weather Bulletin:

https://mausam.imd.gov.in/responsive/all_india_forecast_bulletin.php

For District wise warnings refer: <https://mausam.imd.gov.in/responsive/districtWiseWarningGIS.php>

For Depression Bulletins refer:

https://rsmcnewdelhi.imd.gov.in/uploads/archive/1/1_fba0b7_02.National%20Bulletin%20No%2002-24May2025_0830IST.pdf



Significant weather reported during past 24 hours till 0830 hours IST of today:

- ❖ **Light/moderate Rainfall with thunderstorm & lightning** observed **at most places** over Gangetic West Bengal, Konkan & Goa, Vidarbha, Telangana, Coastal Karnataka, North Interior Karnataka, Kerala & Mahe and Lakshadweep; at many places over Andaman & Nicobar Islands, Arunachal Pradesh, Nagaland, Manipur, Mizoram & Tripura, Odisha, Jammu-Kashmir/Ladakh-Gilgit-Baltistan-Muzaffarabad, Madhya Maharashtra, Marathwada, Chhattisgarh, Coastal Andhra Pradesh & Yanam and South Interior Karnataka; **at a few places** over Jharkhand, Uttarakhand, Himachal Pradesh and West Madhya Pradesh; **at isolated places** over Assam & Meghalaya, Sub Himalayan West Bengal & Sikkim, Bihar, East Uttar Pradesh, East Rajasthan, East Madhya Pradesh, Gujarat Region, Saurashtra & Kutch, Rayalaseema and Tamil Nadu, Puducherry & Karaikal; **Dry** over rest of the country.

Rainfall recorded (in cm) reported during past 24 hours till 0830 hours IST of today:

- ❖ **Tamil Nadu, Puducherry & Karaikal:** Chinnakalar (dist Coimbatore) 15; Avalanche (dist Nilgiris) 14; Upper Bhavani (dist Nilgiris), Chamraj Estate (dist Nilgiris), Nalumukku (dist Tirunelveli) 13 Each; Kakkachi (dist Tirunelveli), Oothu (dist Tirunelveli) 12 Each; K Bridge (dist Nilgiris), Sholayar (dist Coimbatore), Manjolai (dist Tirunelveli) 10 Each; Papanasam (dist Tirunelveli) 8; Naduvattam (dist Nilgiris), Periyar (dist Theni), Glenmorgan (dist Nilgiris), Siruvani Adivaram (dist Coimbatore), Servalar Dam (dist Tirunelveli) 7 Each; Pollachi (dist Coimbatore), Valparai Taluk Office (dist Coimbatore), Devala (dist Nilgiris), Emeraldad (dist Nilgiris), Valparai Pap (dist Coimbatore), Upper Gudalur (dist Nilgiris), Pwd Makkinampatti (dist Coimbatore) 6 Each;
- ❖ **South Interior Karnataka:** Agumbe Emo (dist Shivamogga) 15; Somwarpet (dist Kodagu) 12; Sringeri HMS (dist Chikkamagaluru) 11; Bhagamandala (dist Kodagu) 10; Jayapura (dist Chikkamagaluru) 8; Napoklu (dist Kodagu), Koppa (dist Chikkamagaluru) 7 Each; Kammardi (dist Chikkamagaluru), Balehonnur (dist Chikkamagaluru) 6 Each;
- ❖ **West Madhya Pradesh:** Harda (dist Harda), Hatpiplaya (dist Dewas) 14 Each; Khategaon (dist Dewas) 11; Bagli (dist Dewas), Sonkatch (dist Dewas), Satwas (dist Dewas) 9 Each; Khaknar (dist Burhanpur), Khalwa (dist Khandwa) 7 Each; Multai (dist Betul), Khirkiya-arg (dist Harda), New Harsud (dist Khandwa), Barwaha (dist Khargone), Ichhawar (dist Sehore), Sanawad (dist Khargone) 6 Each;
- ❖ **Coastal Andhra Pradesh & Yanam:** Tekkali (dist Srikakulam) 14; Kalingapatnam (dist Srikakulam) 13; Velairpad (dist Eluru) 9; Therlam (dist Vizianagaram) 8; Koyyalagudem (dist Eluru) 7; Gantayada (dist Vizianagaram) 6;
- ❖ **Telangana:** Gundala (dist B. Kothagudem) 13; Jajireddigudem (dist Suryapet) 11; Chandurthi (dist Rajanna Sircilla) 10; Ranjal (dist Nizamabad), Konijerla (dist Khammam) 9 Each; Julurpad (dist B. Kothagudem), Pinapaka (dist B. Kothagudem), Utnur (dist Adilabad), Makloor (dist Nizamabad), Mahabubabad (dist Mahabubabad), Mudhole (dist Nirmal), Kothaguda (dist Mahabubabad) 8 Each;
- ❖ **Madhya Maharashtra:** Chas ARG (dist Ahilyanagar) 13; Gaganbawada (dist Kolhapur) 11; Ahilyanagar - IMD Pt (dist Ahilyanagar) 7; Radhanagari (dist Kolhapur), Jat (dist Sangli) 6 Each;
- ❖ **Kerala & Mahe:** Lower Sholayar AWS (dist Thrissur) 12; Vyttili (dist Wynad) 11; Vadakara (dist Kozhikode), Parumbikulam (dist Palakkad), Angadipuram (dist Malappuram), Munnar Kseb (dist Idukki) 10 Each; Karipur Ap. (dist Malappuram), Manantoddy (dist Wynad) 9 Each; Quilandi (dist Kozhikode), Manjeri (dist Malappuram), Palakkad (dist Palakkad), Vellathooval AWS (dist Idukki), Malampuzha Dam AWS (dist Palakkad) 8 Each;
- ❖ **Coastal Karnataka:** Siddapura (dist Udupi) 12; Kundapur (dist Udupi) 9; Manki (dist Uttara Kannada) 8; Mudubidre (dist Dakshina Kannada), Belthangadi (dist Dakshina Kannada), Kota (dist Udupi) 7 Each; Honavar (dist Uttara Kannada), Uppinangadi (dist Dakshina Kannada), Dharmasthala (dist Dakshina Kannada) 6 Each; Vidarbha: Amgaon (dist Gondia) 12; Akot (dist Akola), Balapur (dist Akola) 6 Each;
- ❖ **Marathwada:** Latur (dist Latur) 12; Degloor - Fmo (dist Nanded) 7; Manvat (dist Parbhani), Mukhed (dist Nanded) 6 Each;
- ❖ **Konkan & Goa:** Lanja (dist Ratnagiri) 11; Vaibhavwadi (dist Sindhudurg) 10; Devgad (dist Sindhudurg) 7; East Uttar Pradesh: Katarniaghat (dist Bahraich) 11; Shardanagar (dist Kheri) 7;
- ❖ **Odisha:** Pattamundai (dist Kendrapara), Kotagarh (dist Kandhamal) 10 Each; Binjharpur (dist Jajpur), K Nuagaon (dist Kandhamal), Aul (dist Kendrapara), Basudevapur (dist Bhadrak) 9 Each;
- ❖ **Uttarakhand:** Loharkhet (dist Bageshwar) 9; Dunda (dist Uttarkashi), Didihat (dist Pithoragarh) 6 Each; Chhattisgarh: Rajpur (dist Balrampur) 8; Malkharoda (dist Sakti) 7.

Realised Gusty Winds (KMPH) during past 24hours ending at 0300 UTC of today i.e. 28.05.2025:

- ❖ **Jammu-Kashmir:** Ramban (91kmph), Srinagar 3 (57kmph, Jammu & Shopian 35kt(65kmph));
- ❖ **West Madhya Pradesh:** 72 Kmph Harda;
- ❖ **Chhattisgarh:** 61 Kmph Mungeli;
- ❖ **Andaman & Nicobar:** Sri Vijayapuram (58);
- ❖ **Vidarbha:** 54 Kmph Yavatmal;
- ❖ **Tamilnadu Puducherry & Karaikal:** Natham Isro(48 Kmph), Thiruchendur(39 Kmph), Namakkal Amfu(50 Kmph), Vedasandur(57 Kmph), Kovilpatti Amfu(52 Kmph), Kadavur Taluk Office(56 Kmph), Tirutanni Pto(39 Kmph), Tenkasi(54 Kmph), Coimbatore Amfu(56 Kmph), Erode Isro(43 Kmph), Aduthurai Amfu(46 Kmph), Ennore Port(43 Kmph) & Tiruppur Collector Office(44 Kmph)
- ❖ **Gangetic West Bengal:** Canning (44); Amta (41); Raidighi (37); Dum Dum, Alipore (35); Kalyani (31); Jagatballavpur, Nimpith, Sonarpur (30);
- ❖ **Arunachal Pradesh:** LOWERTATO (44), PASHIGHAT(37), KALAKTANG (31), MIAO(31)
- ❖ **Himachal Pradesh:** Bajaura: 43, Kufri: 44, Bilaspur: 33;
- ❖ **Jharkhand:** Bokaro (41); Saraikela (37); Jagannathpur (30);

- ❖ **Bihar:** Supaul (41); Aurangabad, East Champaran, Rajgir (30);
- ❖ **Konkan:** Devgad_Sindhudurg(46 Kmph);
- ❖ **Madhya Maharashtra:** Jalgaon(44 Kmph), Kalwan_Nashik(43 Kmph);
- ❖ **Marathwada:** Jalna(41 Kmph), Chh Sambhaji Nagar (39 Kmph);

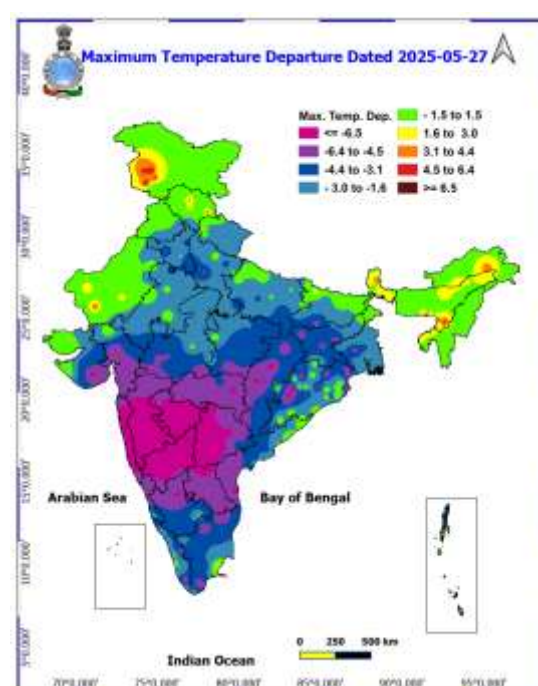
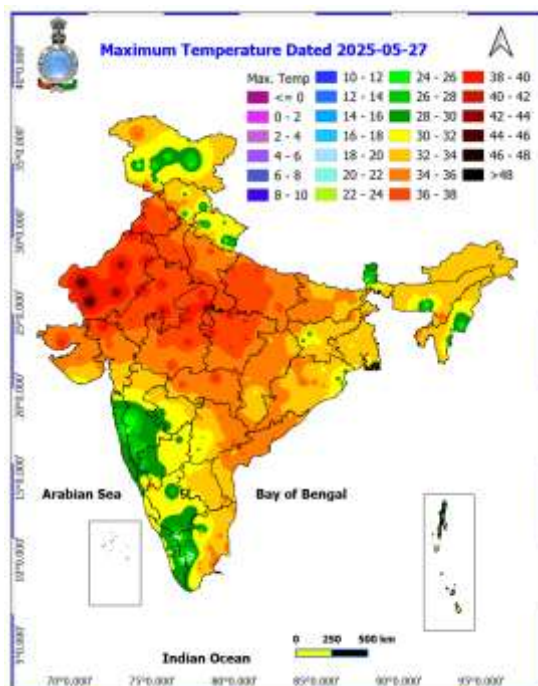
ANNEXURE III

Temperature observations during past 24 hours till 0830 hours IST of today:

- ❖ Yesterday, **Maximum Temperatures** were in the **range of 40-45°C** in many parts of Rajasthan; in some parts of Madhya Pradesh; in isolated parts of Saurashtra & Kutch; in the **range 36-40°C** in many parts of Punjab, Haryana-Chandigarh-Delhi, Uttar Pradesh; in a few parts of Gujarat Region, Bihar, Vidarbha, Coastal Andhra Pradesh & Yanam; in isolated parts of Telangana, Odisha, Chhattisgarh and they were **less than 36°C** elsewhere over remaining parts of the country.
- ❖ Yesterday, **Maximum Temperature** were **markedly above normal (> 5.1°C)** at few places over Jammu-Kashmir-Ladakh-Gilgit-Baltistan-Muzaffarabad; at isolated places over Assam & Meghalaya. appreciably above normal (3.1°C to 5.0°C) at few places over Arunachal Pradesh, Sub Himalayan West Bengal & Sikkim and Himachal Pradesh; at isolated places over Nagaland, Manipur, Mizoram & Tripura, West Uttar Pradesh, West Rajasthan, East Madhya Pradesh and Tamil Nadu, Puducherry & Karaikal. **above normal (1.6°C to 3.0°C)** at isolated places over Bihar and Saurashtra & Kutch. **near normal (-1.5°C to 1.5°C)** at many places over East Rajasthan; at most places over Lakshadweep; at few places over Andaman & Nicobar Islands, Odisha, East Uttar Pradesh, Uttarakhand, Punjab, Gujarat Region and Coastal Andhra Pradesh & Yanam; at isolated places over Gangetic West Bengal, Haryana-Chandigarh-Delhi, West Madhya Pradesh, South Interior Karnataka and Kerala & Mahe. The **highest maximum temperature** of 46.6°C was reported at **Barmer (West Rajasthan)**. (Fig.2).

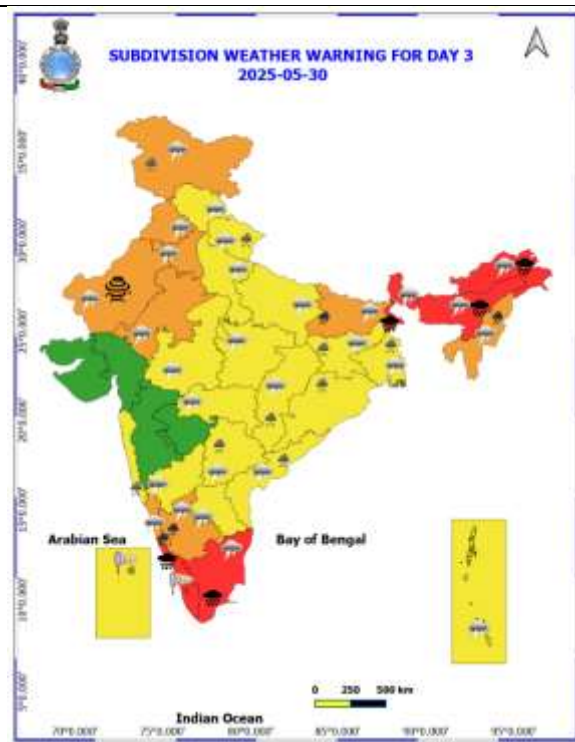
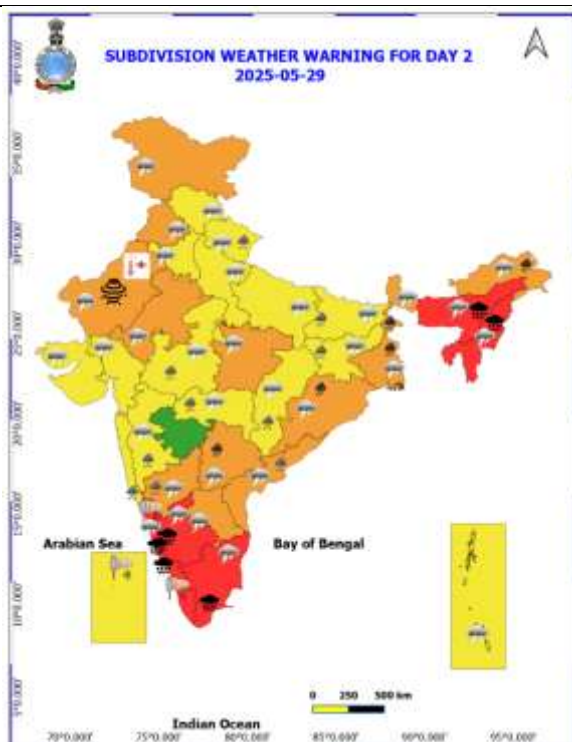
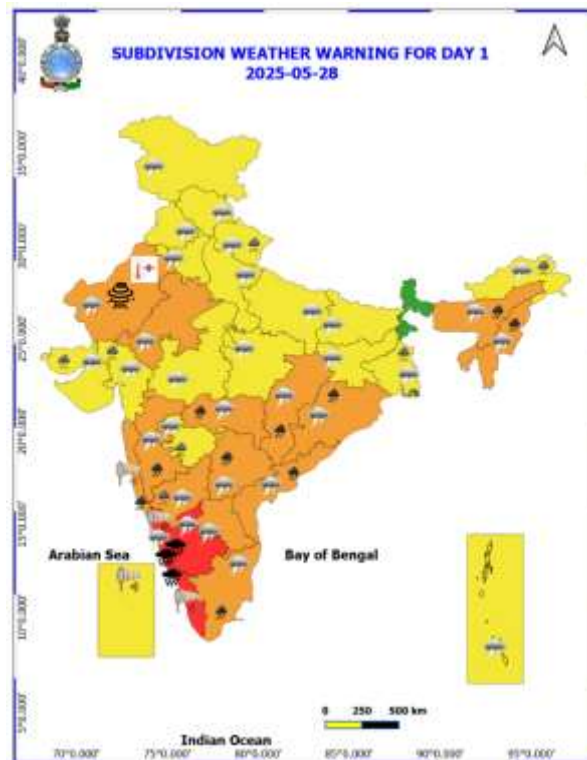
Fig.1: Maximum Temperatures

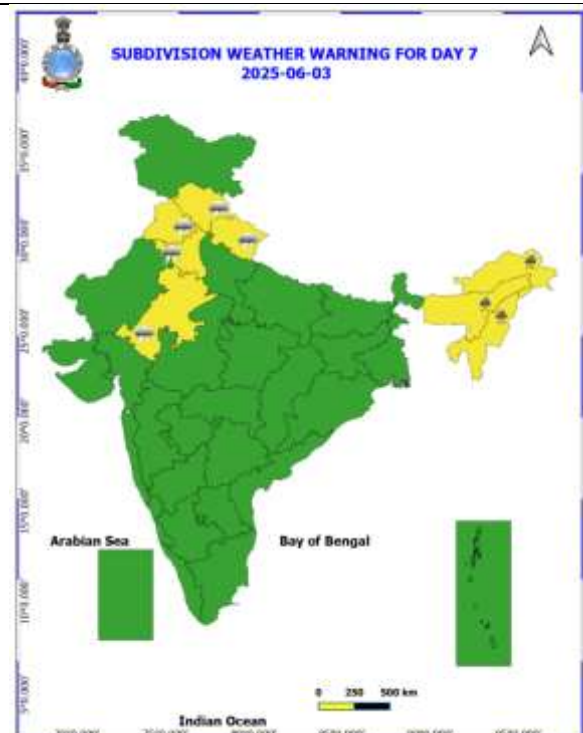
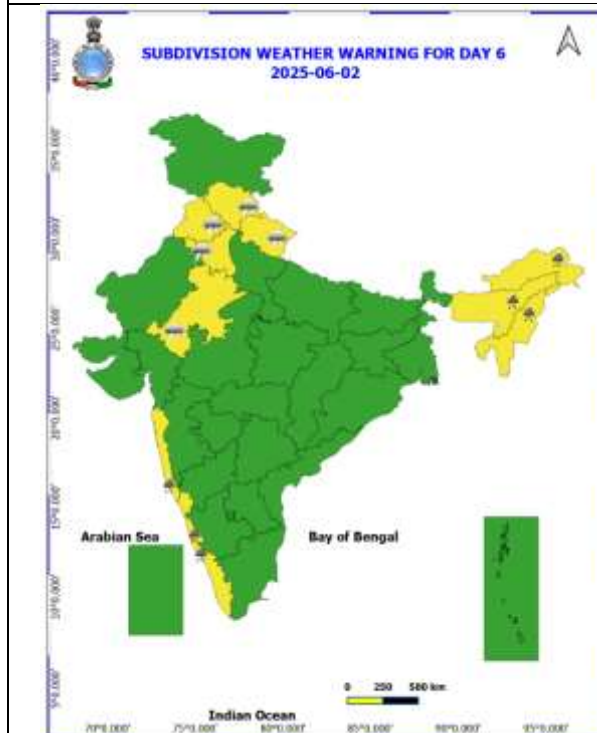
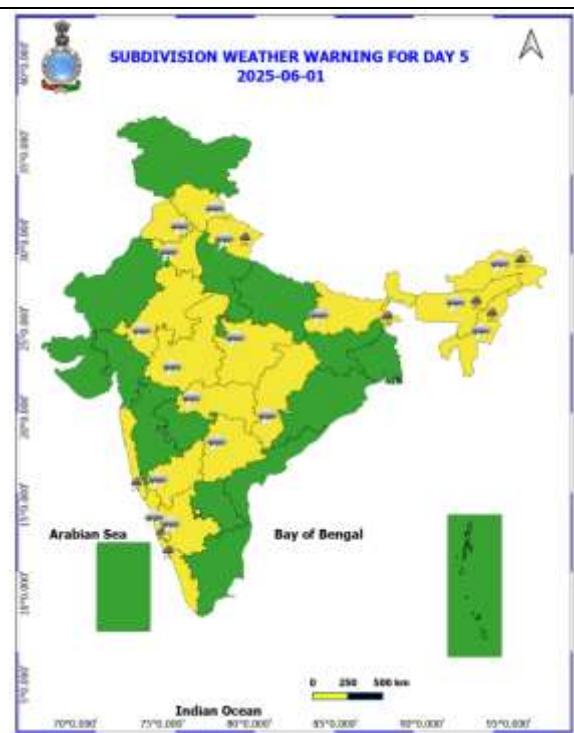
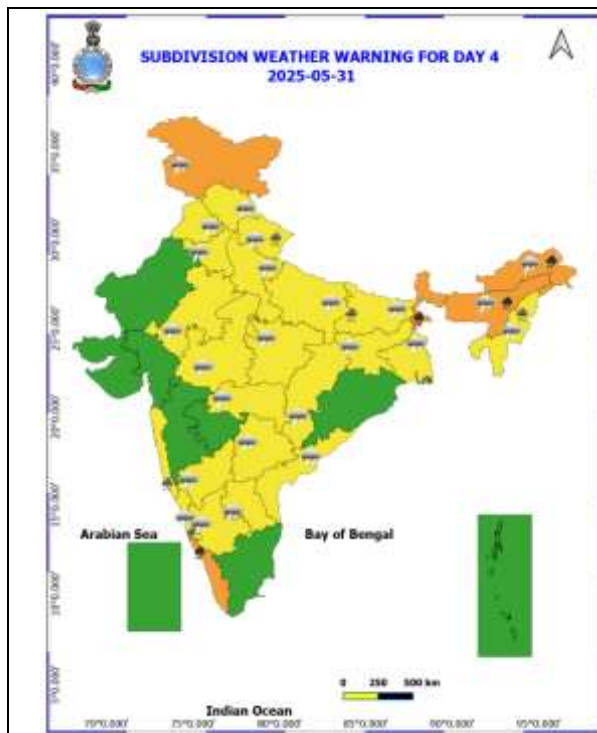
Fig.2: Departure of Maximum Temperatures



7 Days Rainfall Forecast								
S. No.	Subdivision	28-May	29-May	30-May	31-May	01-Jun	02-Jun	03-Jun
		Day 1	Day 2	Day 3	Day 4	Day 5	Day 6	Day 7
1	ANDAMAN & NICOBAR ISLANDS	FWS	FWS	WS	WS	FWS	FWS	FWS
2	ARUNACHAL PRADESH	FWS	WS	WS	WS	WS	WS	WS
3	ASSAM & MEGHALAYA	FWS	WS	WS	WS	WS	WS	WS
4	NAGALAND, MANIPUR, MIZORAM & TRIPURA	WS	WS	WS	WS	FWS	FWS	FWS
5	SUB-HIMALAYAN WEST BENGAL & SIKKIM	SCT	WS	WS	WS	WS	FWS	FWS
6	GANGETIC WEST BENGAL	WS	WS	WS	FWS	SCT	ISOL	ISOL
7	ODISHA	WS	FWS	FWS	SCT	ISOL	ISOL	ISOL
8	JHARKHAND	SCT	FWS	FWS	SCT	SCT	ISOL	ISOL
9	BIHAR	ISOL	SCT	FWS	SCT	ISOL	ISOL	ISOL
10	EAST UTTAR PRADESH	ISOL	ISOL	SCT	SCT	ISOL	ISOL	ISOL
11	WEST UTTAR PRADESH	ISOL	ISOL	SCT	ISOL	ISOL	ISOL	ISOL
12	UTTARAKHAND	FWS	FWS	FWS	FWS	FWS	FWS	FWS
13	HARYANA CHANDIGARH & DELHI	SCT	SCT	FWS	SCT	SCT	SCT	SCT
14	PUNJAB	SCT	FWS	FWS	SCT	SCT	SCT	SCT
15	HIMACHAL PRADESH	ISOL	ISOL	SCT	SCT	SCT	SCT	SCT
16	JAMMU & KASHMIR AND LADAKH	SCT	SCT	FWS	FWS	SCT	ISOL	ISOL
17	WEST RAJASTHAN	ISOL	ISOL	ISOL	DRY	DRY	ISOL	ISOL
18	EAST RAJASTHAN	ISOL	ISOL	ISOL	ISOL	ISOL	ISOL	ISOL
19	WEST MADHYA PRADESH	SCT	SCT	ISOL	ISOL	ISOL	SCT	SCT
20	EAST MADHYA PRADESH	ISOL	SCT	SCT	ISOL	ISOL	SCT	SCT
21	GUJARAT REGION	SCT	SCT	ISOL	ISOL	ISOL	ISOL	ISOL
22	SAURASHTRA & KUTCH	SCT	SCT	ISOL	ISOL	ISOL	ISOL	ISOL
23	KONKAN & GOA	FWS	FWS	SCT	FWS	FWS	SCT	SCT
24	MADHYA MAHARASHTRA	SCT	ISOL	ISOL	ISOL	ISOL	ISOL	ISOL
25	MARATHAWADA	SCT	ISOL	ISOL	ISOL	ISOL	ISOL	ISOL
26	VIDARBHA	FWS	FWS	SCT	SCT	ISOL	ISOL	ISOL
27	CHHATTISGARH	FWS	SCT	ISOL	ISOL	ISOL	ISOL	ISOL
28	COASTAL ANDHRA PRADESH & YANAM	SCT	SCT	SCT	SCT	ISOL	ISOL	ISOL
29	TELANGANA	FWS	FWS	SCT	ISOL	ISOL	ISOL	ISOL
30	RAYALASEEMA	SCT	SCT	SCT	ISOL	ISOL	ISOL	ISOL
31	TAMILNADU PUDUCHERRY & KARAIKAL	ISOL	SCT	SCT	ISOL	ISOL	ISOL	ISOL
32	COASTAL KARNATAKA	WS	WS	WS	WS	WS	FWS	FWS
33	NORTH INTERIOR KARNATAKA	WS	FWS	SCT	ISOL	ISOL	ISOL	ISOL
34	SOUTH INTERIOR KARNATAKA	FWS	WS	FWS	SCT	ISOL	ISOL	ISOL
35	KERALA & MAHE	WS	WS	WS	WS	WS	FWS	FWS
36	LAKSHADWEEP	WS	WS	WS	WS	FWS	FWS	FWS

- As the lead period increases forecast accuracy decreases.





- Action may be taken based on ORANGE AND REDCOLOUR warnings.
- Vulnerable regions likely urban and hilly areas action may be initiated for heavy rainfall warning.
- As the lead period increases forecast accuracy decreases.

Detailed districtwise Multi Hazard weather warning for next five days available at
<https://mausam.imd.gov.in/responsive/districtWiseWarningGIS.php>



Fishermen Warning Graphics

Day 1: 28.05.2025/11:30AM to 29.05.2025/05:30AM



Day 2: 29.05.2025/05:30AM to 30.05.2025/05:30AM



Day 3: 30.05.2025/05:30AM to 31.05.2025/05:30AM



Day 4: 31.05.2025/05:30AM to 01.06.2025/05:30AM



Day 5: 01.06.2025/05:30AM to 02.06.2025/05:30AM



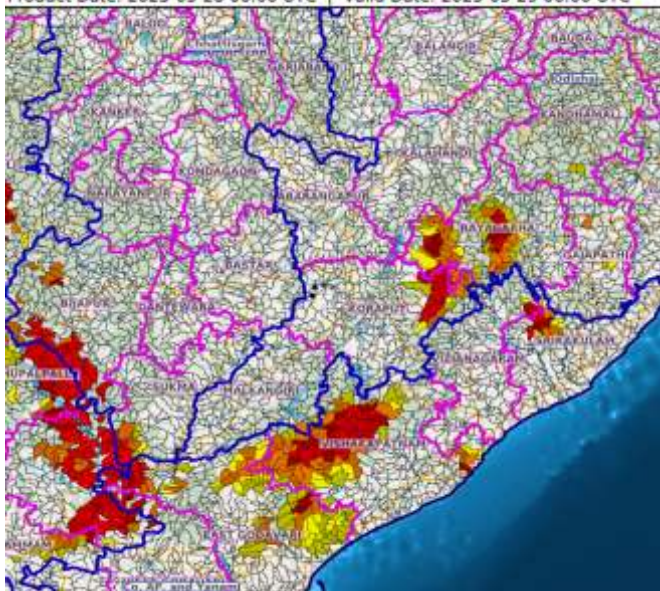
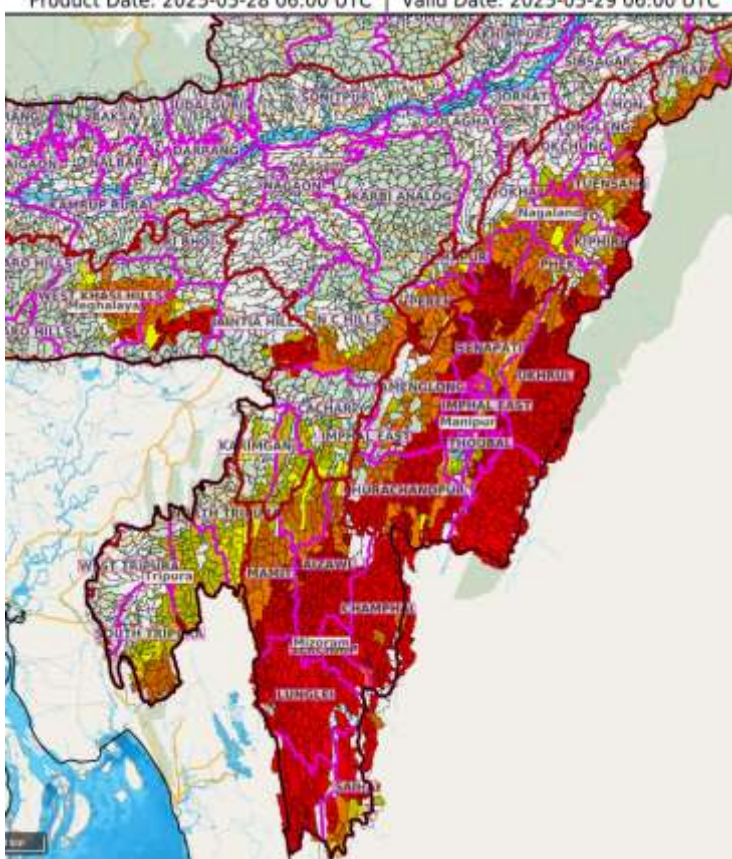
Squally Weather with wind speed 35-50 kmph gusting to 60 kmph

Squally weather with wind speed 45-55 kmph gusting to 65 kmph

Squally wind with speed 45-55 kmph gusting to 65 kmph

Fishermen are advised not to venture into the marked areas.

Flash Flood Guidance

<p>24 hours Outlook for the Flash Flood Risk (FFR) till 1130 IST of 29-05-2025 :</p> <p>Low flash flood risk likely over few watersheds & neighbourhoods of following Met Sub-divisions during next 24 hours.</p> <p>Coastal Andhra Pradesh & Yanam - East Godavari, Srikakulam, Vishakhapatnam, Vizianagaram and West Godavari districts. Adjoining Telangana - Bhadrachalam, Kothagudem, Jayashankar Bhupalpally and Khammam districts. Adjoining Chhattisgarh - Bijapur and Sukma districts.</p> <p>Odisha - Gajapati, Kandhamal, Koraput, Malkangiri and Rayagada districts.</p> <p>Surface runoff/ Inundation may occur at some fully saturated soils & low-lying areas over Area of Concern (AoC) as shown in map due to expected rainfall occurrence in next 24 hours.</p>	<p>Product: GFS FFR Timescale: 24-hr Region: "INDIA"</p> <p>Product Date: 2025-05-28 06:00 UTC Valid Date: 2025-05-29 06:00 UTC</p> 
<p>24 hours Outlook for the Flash Flood Risk (FFR) till 1130 IST of 29-05-2025 :</p> <p>Low to Moderate flash flood risk likely over few watersheds & neighbourhoods of following Met Sub-divisions during next 24 hours.</p> <p>Assam & Meghalaya - Cachar, Hailakandi, N.C Hills, Karimganj, East Khasi Hills, West Khasi Hills and Jaintia Hills districts.</p> <p>Nagaland Mizoram Manipur Tripura (NMMT) - Bishnupur, Chandel, Churachandpur, Imphal East, Imphal West, Senapati, Tamenglong, Thoubal, Ukhrul, Aizawl, Champhai, Kolasib, Lawngtlai, Lunglei, Mamit, Saiha, Serchhip, Dimapur, Kiphire, Kohima, Mokochung, Mon, Peren, Phek, Tuensang, Wokha, Zunheboto, Dhalai, Gomati, Khowai, North Tripura, Sipahijala, South Tripura and Unakoti districts.</p> <p>Surface runoff/ Inundation may occur at some fully saturated soils & low-lying areas over Area of Concern (AoC) as shown in map due to expected rainfall occurrence in next 24 hours.</p>	<p>Product: GFS FFR Timescale: 24-hr Region: "INDIA"</p> <p>Product Date: 2025-05-28 06:00 UTC Valid Date: 2025-05-29 06:00 UTC</p> 

Weather forecast over Delhi/NCR during 28th to 31th May 2025**Past Weather:**

There has been rise in minimum temperature upto 2°C and rise in maximum temperature up to 2°C over Delhi/NCR during the past 24 hours. The maximum and minimum temperatures over Delhi are in the range of 36 to 37°C and 26 to 28°C respectively. The minimum temperature was near normal and the maximum temperature was below normal up to 3 - 5°C over Delhi/NCR. Partly cloudy sky conditions with predominant surface wind from the east-south-east direction with wind speeds less than 14 kmph prevailed during the past 24 hours. Partly cloudy sky conditions with wind speed less than 10 kmph from the east-south-east direction prevailed over the region in the forenoon today.

Weather Forecast:

28.05.2025: Partly cloudy sky. Very light rain to light rain accompanied with thunderstorm/lightning and gusty winds (speed 30 – 40 kmph) temporarily reaching to 50 kmph during thunderstorm. The maximum temperatures over Delhi are likely to be in the range of 38 to 40°C. The maximum temperature will be below normal up to 1 - 2°C. The predominant surface wind will likely be from the southeast direction with a wind speed of less than 10 kmph till evening. It would increase becoming less than 18 kmph from the southeast direction during the night.

29.05.2025: Partly cloudy sky. Very light rain to light rain accompanied with thunderstorm/lightning and gusty winds (speed 40 – 50 kmph) temporarily reaching to 60 kmph during thunderstorm towards evening/night. The maximum and minimum temperatures over Delhi are likely to be in the range of 38 to 40°C and 27 to 29°C respectively. The minimum temperature will be near normal and the maximum temperature will be near normal. The predominant surface wind will likely be from the southwest direction with a wind speed of less than 15 kmph during the morning hours. The wind speed will gradually increase becoming 08-12 kmph from the southwest direction in the afternoon. It will increase becoming less than 20 kmph from the south direction during evening and night.

30.05.2025: Partly cloudy sky. light rain to moderate rain accompanied with thunderstorm/lightning and gusty winds (speed 50 – 60 kmph) temporarily reaching to 70 kmph during thunderstorm. The maximum and minimum temperatures over Delhi are likely to be in the range of 36 to 38°C and 28 to 30°C respectively. The minimum temperature will be above normal up to 1 - 2°C and the maximum temperature will be below normal up to 1 - 3°C. The predominant surface wind will likely be from the southwest direction with a wind speed of less than 10 kmph during the morning hours. The wind speed will gradually increase becoming 10-15 kmph from the west direction in the afternoon. It will decrease becoming less than 10 kmph from the west direction during evening and night.

31.05.2025: Partly cloudy sky. Very light rain to light rain accompanied with thunderstorm/lightning and gusty winds (speed 30 – 50 kmph) temporarily reaching to 60 kmph during thunderstorm. The maximum and minimum temperatures over Delhi are likely to be in the range of 36 to 38°C and 27 to 29°C respectively. The minimum temperature will be above normal up to 1 - 2°C and the maximum temperature will be below normal up to 1 - 3°C. The predominant surface wind will likely be from the northwest direction with a wind speed of less than 10 kmph during the morning hours. The wind speed will gradually increase becoming 10-15 kmph from the southwest direction in the afternoon. It will increase becoming less than 20 kmph from the southwest direction during evening and night.

Impact expected and Action Suggested due to thunderstorm with lightning/gusty winds:

- Be cautious and take precautionary measures, though there is the likelihood of thunderstorm/lightning and gusty winds (speed 30 – 50 kmph) temporarily reaching to 60 kmph during thunderstorm with dust rising surface winds.
- Breaking of tree branches, uprooting of large avenue trees, Large dead limbs blown from trees, Damage to standing crops, Minor to major damage to power and communication lines due to breaking of branches, Partial damage to vulnerable structures due to strong winds, Loose objects may fly.
- People are advised to keep a watch on the weather for worsening conditions and be ready to move to safer places accordingly, stay indoors, close windows & doors and avoid travel if possible, take safe shelters; do not take shelter under trees, do not lie on concrete floors and do not lean against concrete walls, unplug electrical/ electronic appliances, immediately get out of water bodies, keep away from all the objects that conduct electricity.

Impact expected and action suggested over Northeastern States, Sub-Himalayan West Bengal & Sikkim due to heavy rainfall (orange and red areas) and squally winds

Impact expected:

- ❖ Breaking of tree branches, uprooting of small trees like banana, papaya, drum sticks. Strong wind and rain may damage plantation, horticulture and standing crops.
- ❖ Partial damage to vulnerable structures due to strong winds and rain.
- ❖ Minor damage to kutcha houses/walls, huts and roads due to heavy rain.
- ❖ Loose objects may fly.
- ❖ Onshore and offshore operations may get affected.
- ❖ Small ships, trawlers and boats may be affected.
- ❖ Road and rail traffic may be affected due to heavy rain and squally winds.
- ❖ There could be localised landslides, mudslides, landslips, water logging, inundation and flooding over low lying areas.
- ❖ Occasional reduction in visibility due to heavy rainfall.
- ❖ Helicopter services may get affected.

Action suggested:

- ❖ People are advised to keep a watch on the weather for worsening conditions and be ready to move to safer places accordingly.
- ❖ Take safe shelters; do not take shelter under trees, as there could be lightning.
- ❖ In case of expected lightning, unplug electrical/ electronic appliances, immediately, get out of water bodies and keep away from all the objects that conduct electricity.
- ❖ Tourism and recreational activities to be regulated.
- ❖ Onshore and offshore activities to be judiciously regulated.
- ❖ Helicopter services to be regulated.

Impact & Action Suggested due to Extremely and heavy to very heavy rainfall over west coast and other areas (For Red & Orange colour warning areas)

- ❖ **Extremely heavy rainfall** at isolated places over Tamilnadu Puducherry & Karaikal on 29th & 30th, Kerala & Mahe during 28th-30th, Coastal & South Interior Karnataka on 28th & 29th May.
- ❖ **Very heavy rainfall** very likely Coastal Andhra Pradesh & Yanam, Konkan & Goa, Madhya Maharashtra, Vidarbha, Chhattisgarh on 28th, Coastal Karnataka, Kerala & Mahe during 28th May -02nd June; South Interior Karnataka, Telangana, Tamilnadu Puducherry & Karaikal during 28th -30th, Odisha on 28th & 29th, Bihar on 30th May.

Impact Expected

- ❖ Localized Flooding of roads, water logging in low lying areas of the above region.
- ❖ Occasional reduction in visibility due to heavy rainfall.
- ❖ Minor damage to kutcha roads.
- ❖ Possibilities of damage to vulnerable structure.
- ❖ Localized Landslides/Mudslides
- ❖ Damage to horticulture and standing crops in some areas due to inundation.
- ❖ It may lead to riverine flooding in some river catchments (for riverine flooding please visit Web page of CWC).

Action Suggested

- ❖ Check for traffic congestion on your route before leaving for your destination.
- ❖ Follow any traffic advisories that are issued in this regard.
- ❖ Avoid going to areas that face the water logging problems often.
- ❖ Avoid staying in vulnerable structure.

Impact expected and action suggested due to isolated thunderstorm with lightning/gusty & Squally winds over

- ✓ **Thundersquall wind speed reaching 50-60 kmph gusting to 70 kmph** over likely over Karnataka, Coastal Andhra Pradesh & Yanam, Rayalaseema on 28th & 29th May. East Madhya Pradesh on 29th, Bihar on 30th May. Rajasthan during 28th-30th, Jammu-Kashmir-Ladakh-Gilgit-Baltistan-Muzaffarabad during 29th-31st, Punjab on 29th & 30th, Haryana Chandigarh & Delhi on 30th May.

Impact expected:

- Minor to Major damage to banana and papaya trees.
- Strong wind/hail may damage plantation, horticulture and standing crops.
- Partial damage to vulnerable structures due to strong winds.
- Minor damage to kutcha houses/walls and huts.
- Loose objects may fly.

Action suggested:

- People are advised to keep a watch on the weather for worsening conditions and be ready to move to safer places accordingly.
- Stay indoors, close windows & doors and avoid travel if possible.

- Take safe shelters; do not take shelter under trees.
- Do not lie on concrete floors and do not lean against concrete walls.
- Unplug electrical/ electronic appliances.
- Immediately get out of water bodies.
- Keep away from all the objects that conduct electricity.

Legends & abbreviations:

- ❖ **Heavy Rain:**64.5-115.5mm; **Very Heavy Rain:**115.6-204.4mm; **Extremely Heavy Rain:** >204.4mm.
- ❖ **Obsy:** Observatory; **AWS:** Automatic Weather Station; **ARG:** Automatic Rain Gauge; **dist:** District; **NH:** National Highway; **KVK:** Krishi Vigyan Kendra; **DVC:** Damodar Valley Corporation; **PTO:** Part Time Office, **Aero:** Aerodrome, **IAF:** Indian Air Force.
- ❖ **Region wise classification of meteorological Sub-Divisions:**
 - **Northwest India:** Western Himalayan Region (Jammu-Kashmir-Ladakh-Gilgit-Baltistan-Muzaffarabad, Himachal Pradesh and Uttarakhand); Punjab, Haryana-Chandigarh-Delhi; West Uttar Pradesh, East Uttar Pradesh, West Rajasthan and East Rajasthan.
 - **Central India:** West Madhya Pradesh, East Madhya Pradesh, Vidarbha and Chhattisgarh.
 - **East India:** Bihar, Jharkhand, Sub-Himalayan West Bengal & Sikkim; Gangetic West Bengal, Odisha and Andaman & Nicobar Islands.
 - **Northeast India:** Arunachal Pradesh, Assam & Meghalaya and Nagaland, Manipur, Mizoram & Tripura.
 - **West India:** Gujarat Region, Saurashtra & Kutch, Konkan & Goa, Madhya Maharashtra and Marathawada.
 - **South India:** Coastal Andhra Pradesh & Yanam, Telangana, Rayalaseema, Coastal Karnataka, North Interior Karnataka, South Interior Karnataka, Kerala & Mahe, Tamil Nadu, Puducherry & Karaikal and Lakshadweep.

LEGENDS

1. अंडमान और निकोबार द्वीपसमूह

2. अरुणाचल प्रदेश

3. असम और मेघालय

4. नागालैंड, मणिपुर, मिजोरम और त्रिपुरा

5. उप-हिमालयी पश्चिम बंगाल और सिक्किम

6. गंगीय पश्चिम बंगाल

7. ओडिशा

8. झारखंड

9. बिहार

10. पूर्वी उत्तर प्रदेश

11. पश्चिम उत्तर प्रदेश

12. उत्तराखंड

13. हरियाणा, चंडीगढ़ और दिल्ली

14. पंजाब

15. हिमाचल प्रदेश

16. जम्मू और कश्मीर और लद्दाख

17. पश्चिम राजस्थान

18. पूर्वी राजस्थान

19. पश्चिम मध्य प्रदेश

20. पूर्वी मध्य प्रदेश

21. गुजरात

22. सौराष्ट्र

23. कोंकण और गोवा

24. मध्य महाराष्ट्र

25. मराठवाड़ा

26. विदर्भ

27. छत्तीसगढ़

28. तटीय आंध्र प्रदेश और यनम

29. तेलंगाना

30. रायलसीमा

31. तमिलनाडु, पुडुचेरी और कराईकल

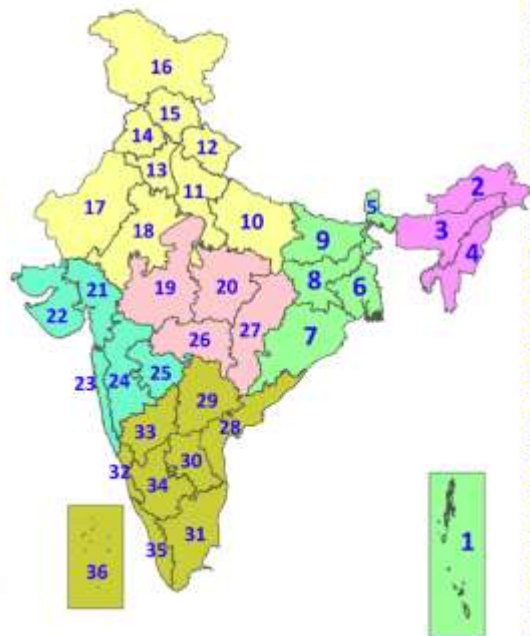
32. तटीय कर्नाटक

33. आंतरिक उत्तरी कर्नाटक

34. आंतरिक दक्षिणी कर्नाटक

35. केरल और माहे

36. लक्षद्वीप



1. Andaman & Nicobar Islands

2. Arunachal Pradesh

3. Assam & Meghalaya

4. Nagaland, Manipur, Mizoram & Tripura

5. Sub-Himalayan West Bengal & Sikkim

6. Gangetic West Bengal

7. Odisha

8. Jharkhand

9. Bihar

10. East Uttar Pradesh

11. West Uttar Pradesh

12. Uttarakhand

13. Haryana, Chandigarh & Delhi

14. Punjab

15. Himachal Pradesh

16. Jammu & Kashmir and Ladakh

17. West Rajasthan

18. East Rajasthan

19. West Madhya Pradesh

20. East Madhya Pradesh

21. Gujarat

22. Saurashtra

23. Konkan & Goa

24. Madhya Maharashtra

25. Marathwada

26. Vidarbha

27. Chhattisgarh

28. Coastal Andhra Pradesh & Yanam

29. Telangana

30. Rayalaseema

31. Tamilnadu, Puducherry & Karaikal

32. Coastal Karnataka

33. North Interior Karnataka

34. South Interior Karnataka

35. Kerala & Mahe

36. Lakshadweep

SPATIAL DISTRIBUTION (% of Stations reporting)

% Stations	Category	% Stations	Category
76-100	Widespread (WS/Most Places)	26-50	Scattered (SCT/A Few Places)
51-75	Fairly Widespread (FWS/Many Places)	1-25	Isolated (ISOL)



Fog



Heavy Rain



Very Heavy Rain



Extremely Heavy Rain



Thunder & Lightning



Hailstorm



Dust Raising Winds



Heavy Snow



Dust Storm



Heat Wave



Warm Night



Hot Day



Hot & Humid



Strong Surface Winds



Cold Wave



Cold Day



Ground Frost

COLOUR CODED WARNING

No Warning (No Action)

Watch (Be Aware)

Alert (Be Prepared To Take Action)

Warning (Take Action)

Probabilistic Forecast

Terms	Probability of Occurrence (%)
Unlikely	< 25
Likely	25 - 50
Very Likely	50 - 75
Most Likely	> 75

* Red colour warning does not mean "Red Alert", Red colour warning means "Take Action".

Forecast and Warning for any day is valid from 0830 hours IST of day till 0830 hours IST of next day.

For more details, kindly visit <https://mausam.imd.gov.in> or contact: 011-2434-4599

(Service to the Nation since 1875)

DEFINITION/CRITERIA

Rain/ Snow *

Heavy: 64.5 to 115.5 mm/cm *
Very Heavy: 115.6 to 204.4 mm/cm *
Extremely Heavy: > 204.4 mm/cm *

Heat Wave

When maximum temperature of a station reaches $\geq 40^{\circ}\text{C}$ for plains and $\geq 30^{\circ}\text{C}$ for hilly regions
(a) Based on Departure from normal

Heat Wave: Maximum Temperature Departure from normal 4.5°C to 6.4°C .

Severe Heat Wave: Maximum Temperature Departure from normal $\geq 6.5^{\circ}\text{C}$

(b). Based on Actual maximum temperature

Heat Wave: When actual maximum temperature $\geq 45^{\circ}\text{C}$.

Severe Heat Wave: When actual maximum temperature $\geq 47^{\circ}\text{C}$.

(c). Criteria for heat wave for coastal stations

When maximum temperature departure is $> 4.5^{\circ}\text{C}$ from normal. Heat Wave may be described provided maximum temperature $\geq 37^{\circ}\text{C}$.

Warm Night

When maximum temperature remains 40°C

Warm Night: When minimum temperature departure 4.5°C to 6.4°C .

Severe Warm Night: When minimum temperature departure $> 6.4^{\circ}\text{C}$.

Cold Wave

When minimum temperature of a station $\leq 10^{\circ}\text{C}$ for plains and $\leq 0^{\circ}\text{C}$ for hilly regions.

(a). Based on departure

Cold Wave: Minimum Temperature Departure from normal -4.5°C to -6.4°C .

Severe Cold Wave: Minimum Temperature Departure from normal $\leq -6.5^{\circ}\text{C}$

(b) Based on actual Minimum Temperature (for Plains only)

Cold Wave: When Minimum Temperature is $\leq 4.0^{\circ}\text{C}$

Severe Cold Wave: When Minimum Temperature is $\leq 2.0^{\circ}\text{C}$

(c) For Coastal Stations

When Minimum Temperature departure is $\leq -4.5^{\circ}\text{C}$ & actual Minimum Temperature is $\leq 15^{\circ}\text{C}$

Cold Day

When minimum temperature of a station $\leq 10^{\circ}\text{C}$ for plains and $\leq 0^{\circ}\text{C}$ for hilly regions

Based on departure

Cold Day: Maximum Temperature Departure from normal -4.5°C to -6.4°C .

Severe Cold Day: Maximum Temperature Departure from normal $\leq -6.5^{\circ}\text{C}$

Fog

Phenomenon of small droplets suspended in air and the horizontal visibility $< 1\text{km}$

Moderate Fog: When the visibility between 500-200 metres

Dense Fog: when the visibility between 50- 200 metres

Very Dense Fog: when the visibility < 50 metres

Thunderstorm

Sudden electrical discharges manifested by a flash of light (Lightning) and a sharp rumbling sound (thunder)

Dust/Sand Storm

An ensemble of particles of dust or sand energetically lifted to great heights by a strong and turbulent wind.

Frost

Ice deposits on ground

Air temperature $\leq 4^{\circ}\text{C}$ (over Plains)

Squall

A strong wind that rises suddenly, lasts for atleast 1 minute.

Moderate: Wind speed 52-61 kmph

Severe: Wind speed 62-67 kmph

Very Severe: Wind speed > 67 kmph

Sea State

Effect of various waves in the sea over specific area

Rough to very rough: Wind speed 41-62 kmph (22-33 knots) & Wave height 2.5-6 metre

High to very high: Wind speed 63-117 kmph (34-63 knots) & Wave height 6-14 metre

Phenomenal: Wind speed > 117 kmph (> 63 knots) & Wave height > 14 metre

Cyclone

Cyclonic Storm: Wind speed 62-87 kmph (34-47 knots)

Severe Cyclonic Storm: Wind speed 88-117 kmph (48-63 knots)

Very Severe Cyclonic Storm: Wind speed 118-165 kmph (64 - 89 knots)

Extremely Severe Cyclonic Storm: Wind speed 166-220 kmph (90 -119 knots)

Super Cyclone Storm: Wind speed > 220 kmph (> 119 knots)

* Red colour warning does not mean "Red Alert", Red colour warning means "Take Action".

Forecast and Warning for any day is valid from 0830 hours IST of day till 0830 hours IST of next day.

For more details, kindly visit <https://mausam.imd.gov.in> or contact: 011-2434-4599

(Service to the Nation since 1875)

Hot and Humid: When maximum temperatures remain 3°C above normal along with the above normal relative humidity.